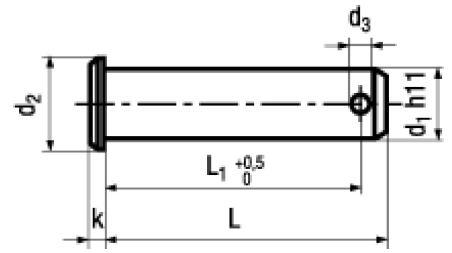




DIN 1434

Standard withdrawn



BN 483

Clevis pins with hole

for fork heads

Steel

plain

- ~UNI 1710



Appropriate to washer acc. DIN 433 and split pin DIN 94

$d_3 \text{ } \varnothing 5$: according to DIN 1434 is 1,6 mm

d_1	d_2	d_3	k	L_1	L
4	6	1	1	10,2	12
5	8	1,2	1,5	12	14
6	9	1,6	1,5	15,5	18
8	12	2	2	19	22
10	14	3,2	2	24	28
12	17	4	3	30	35
14	19	4	3	35	40
16	21	4	3	40	45