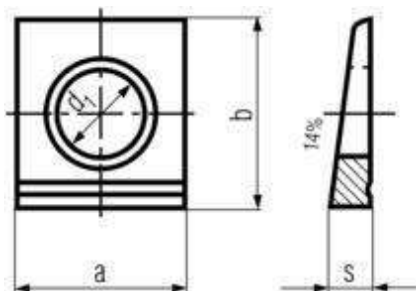


## DIN 435 Specifications



All measurements in millimeters (mm)

<b>d</b>	<b>used for</b>	<b>a</b>	<b>b</b>	<b>s</b>
9	M8	22	22	4.6
11	M10	22	22	4.6
14	M12	26	30	6.2
18	M16	32	36	7.5
22	M20	40	44	9.2
24	M22	44	50	10
26	M24	56	56	10.8
30	M27	56	56	10.8
33	M30	62	62	11.7

All information is strictly informative